

Automated Brain Tumor Analysis and Categorization using Deep Neural Networks

M Siva Kumar, K Sanjana, K Lohith Yadav, M Satya Kailash

Assistant Professor, Department of Information Technology, ACE Engineering College, Hyderabad, India

IV B. Tech Students, Department of Information Technology, ACE Engineering College, Hyderabad, India

ABSTRACT: The current project presents a sophisticated AI healthcare technology, which improves the functionality of hospitals by automating processes, performing efficient diagnoses, and managing the medical records. The software offers an interface, from where the doctor will be able to review and analyze the patient's report. At the same time, the patient will have the possibility to safely download the documents of his or her medical history.

The main function of the platform is represented by an AI-based diagnostic system for diagnosing brain tumors based on MRI images. By integrating CNNs and SVM, the system detects the tumor and classifies it into one of the types, including Glioma, Meningioma, and Pituitary tumors. Predictions made by the system assist doctors in making decisions about further treatment of the disease.

Furthermore, the presented technology guarantees the real-time processing of data, intuitive user interface, and top-class data privacy and security. Scalability is another advantage of the product as it can be integrated with other hospitals' platforms and new AI models.

I. INTRODUCTION

Brain tumors constitute a serious disease that calls for timely and precise identification so as to offer an appropriate response. However, current practices of examining MRI images are highly tedious and need professional experience. In light of the development of intelligent machines, automation is possible when identifying and categorizing brain tumors. The following project intends to incorporate AI into the analysis of MRI images by employing CNN algorithms. It seeks to increase diagnostic precision and minimize manual labor.

II. EXISTING SYSTEM

Currently, brain tumor detection systems employ manually performed diagnosis via MRI scans by radiologists. This approach is reliable but very time-consuming and highly dependent on the skills and experience of the radiologist performing the analysis. It is often possible that a tumor will not be detected in its early stages because of small changes in the image.

Computer-based systems for diagnosing brain tumors employ basic image processing and machine learning algorithms. Nevertheless, they have several flaws, such as the inability to accurately detect a brain tumor, the need for manual extraction of features, and inefficiency. Currently available systems cannot make predictions or determine the types and severity of brain tumors.

Most systems also do not incorporate any kind of integrated platform that would allow managing the patients, analyzing data, or visualizing it in some way.

III. PROPOSED SYSTEM

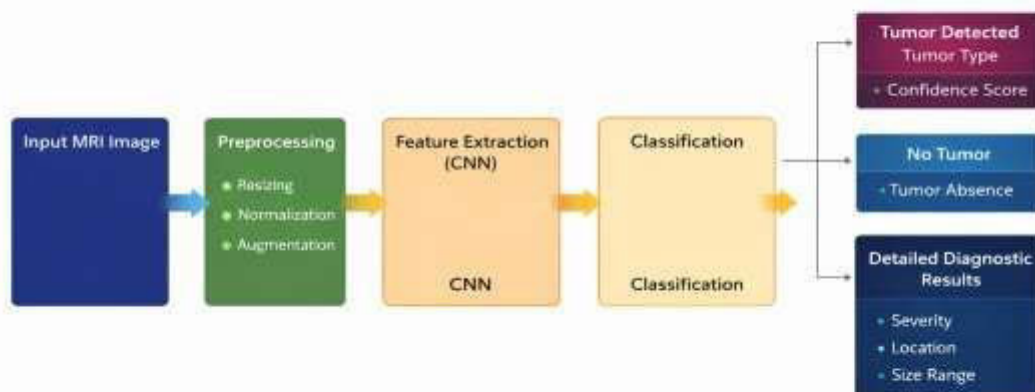
This suggested approach proposes an AI-driven brain tumor detection solution that uses deep learning-based algorithms for effective analysis of brain MRI images. The application enables its users to upload MRI images of brain tissues and process them using a CNN algorithm, detecting any tumors present on a brain tissue and classifying their type.

With the help of deep learning algorithms, the system automatically selects the features required for tumor detection and classification and offers predictions of the presence of a tumor, the type of a detected tumor, and the probability of this prediction.

Apart from that, a user is provided with additional diagnostic information about the detected tumor, including its location, degree of malignancy, and other medical characteristics. What is more, the proposed system is designed as a web application allowing doctors and patients to work together easily. In particular, the app comes equipped with various features such as patient records management, login functionality, real-time analysis, statistics visualization, among others. Thus, the use of the proposed application will allow for improving the efficiency and effectiveness of brain tumor detection.

IV. METHODOLOGY

4. METHODOLOGY



i. Data Collection

Data is collected in the form of brain MRI images from publicly available sources and also from clinics. This involves acquiring brain MRI images that include both tumour as well as no tumour cases, classified according to tumour types.

ii. Data Preprocessing

The acquired images go through several steps of preprocessing in order to ensure good quality images. This includes resizing of the images, removal of any kind of image noise, normalization and converting the image to a particular format for further processing. Also, certain data augmentation methods like rotation and flipping of the image are used to boost the performance of the algorithm.

iii. Feature Extraction

Key features are extracted from brain MRI images using deep learning algorithms like convolutional neural networks (CNNs).

iv. Model Training and Classification

Using the key features extracted, we train our deep learning model to classify images into categories like Tumour/No Tumour or specific tumour types.

v. Prediction and Analysis

When new MRIs images are uploaded, they go through several steps in the process and eventually are predicted whether or not there is any brain tumour present in the image. Other important things like the type of tumour, its severity and exact location within the brain are also predicted based on the model.

vi. Result Visualization

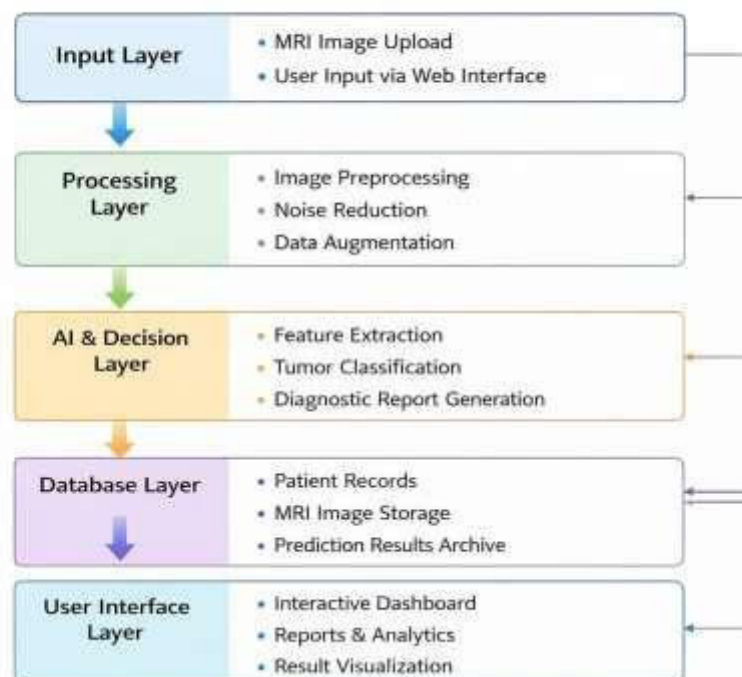
Result visualization in the form of graphs, tables and detailed patient reports can be done through a user-friendly web interface.

V. SYSTEM ARCHITECTURE

The architectural framework describes the interactions between the different parts of the tumor detection system that analyzes MRI images, classifies tumors and generates output results efficiently. It gives an overview of the data processing in the system and the operations of the different components to ensure accurate diagnostic output.

As mentioned before, there are many layers in the system's architecture, which include the input layer, processing layer, AI & decision layer, database layer, and the user interface layer. In the input layer, users are allowed to submit the MRI images of their brain through the system's web interface. After submission, these images will be submitted to the processing layer, where some preprocessing techniques, such as resizing, normalization, noise removal, and data augmentation will be carried out on these images.

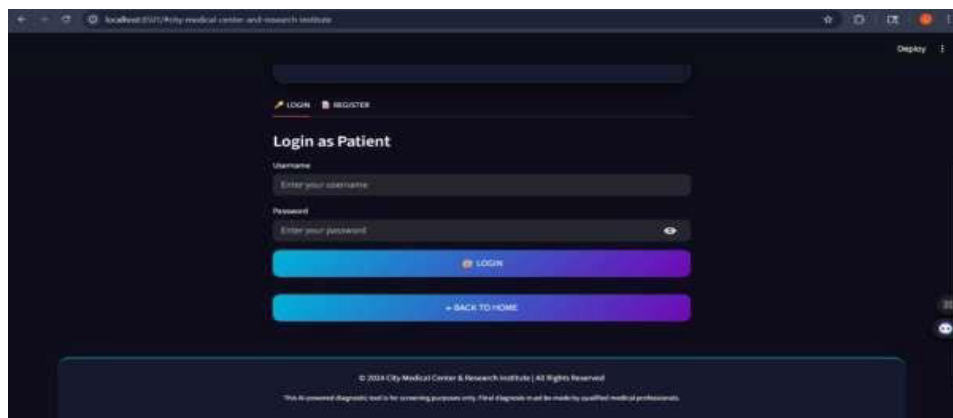
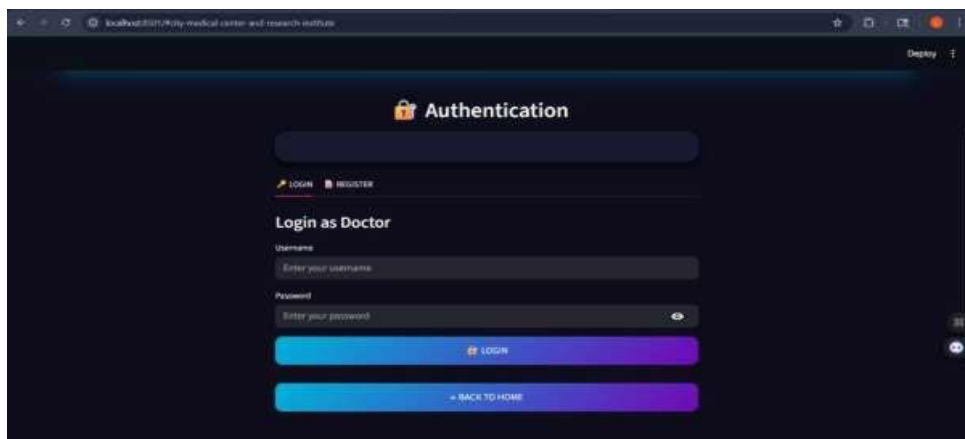
5. SYSTEM ARCHITECTURE



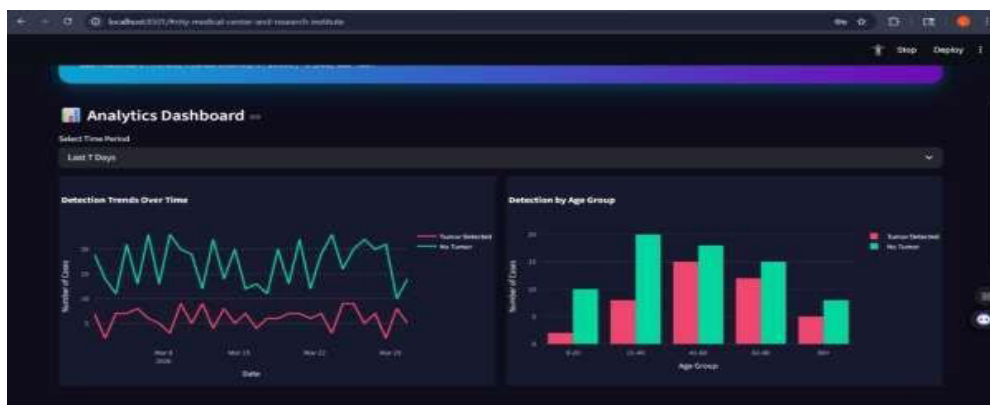
The processed images will then be sent to the AI & Decision layer, where the images' characteristics will be extracted using a Deep Learning algorithm called CNN. This process is aimed at detecting whether there is a presence of brain tumor or not. If there is any presence of tumor, the system is also able to classify the type of tumor based on its

features. The results will include a statement about the presence of tumor and the confidence level. The system will also give extra details like the location, severity, and estimated size of the tumor. The results and the images used by the system will be stored in the database layer for future use. The user interface layer displays all the results through the interactive dashboard provided by the system.

VI. RESULTS AND OUTPUT



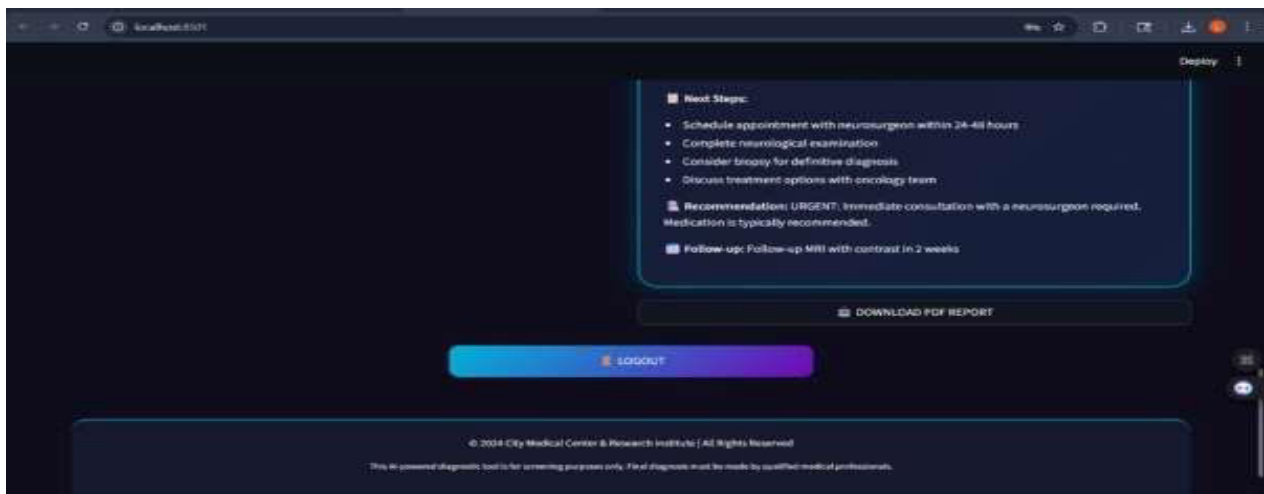
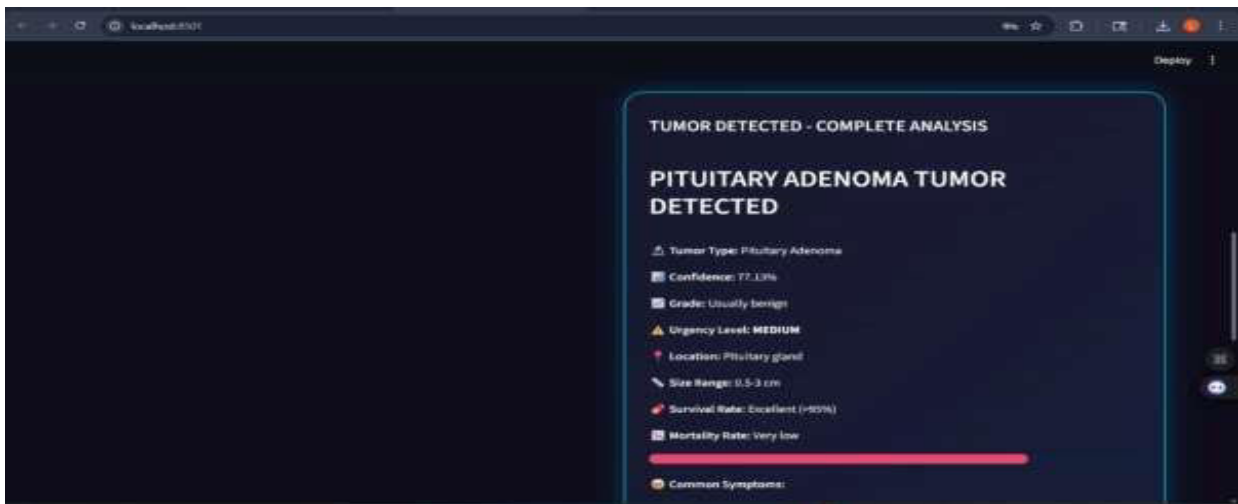
USER AUTHENTICATION MODULES



DASHBOARD OVERVIEW



MRI SCAN UPLOAD MODULE



TUMOR DETECTION REPORT

VII. CONCLUSION

Artificial intelligence technologies have been rapidly developing over recent decades. They help enhance the performance of diagnostic algorithms by increasing their capabilities of detecting various abnormalities that require treatment. This project – Brain Tumor Detection System – illustrates the ways in which AI technologies may be implemented in the sphere of medicine. In particular, this system uses deep learning to identify brain tumors through analysis of MRI images.

The system developed in this project does not simply identify whether the brain has a tumor or not. It provides healthcare professionals with additional information regarding the type of cancer, confidence level of the findings, its severity, and other factors that may play an essential role in providing adequate treatment. Besides, the addition of the following elements such as patient management, analytics dashboards, and generation of reports makes the proposed system more convenient and practical. Overall, the implementation of these tools will help to facilitate the process of diagnosing patients for healthcare professionals.

VIII. FUTURE SCOPE

Despite being promising, the developed Brain Tumor Detection System still presents room for improvements and enhancements that should be considered for further success. First of all, the next step towards enhancing the proposed solution would involve developing the system's ability for analyzing images in real time. This means that after scanning patients' heads with an MRI machine, one will receive instant notifications about detected brain tumors and additional assistance in diagnosing a condition.

Further developments in the area might also relate to implementing new deep learning techniques and models, which should help achieve better results in terms of accuracy. Such techniques as hybrid CNNs and transformers might be of great use and should be tested and implemented into the system. Moreover, in the future, it might become possible to train the AI model to not only detect tumors but also diagnose their types.

A wide range of improvements might be made in terms of making the platform more scalable and convenient for users. For instance, the platform could be connected to cloud services in order to ensure safe and fast access to the information from any part of the world and at any moment. In addition to that, incorporating mobile applications should contribute to increasing the convenience of using the proposed tool. It might also become necessary to integrate more advanced functionality into the system by adding new features. These might refer to incorporating 3D MRI analysis and advanced analytics as well as using data on tumor progressions. Finally, the development of algorithms aimed at learning from new data would result in even greater efficiency of the model.

REFERENCES

1. Alladi, R., Mohan, R. N. V. J., & Ramana, K. V. (2024a). "Deep Learning Approach for Early Detection and Diagnosis of Teenager Interstitial Lung Disease", In CRC Press eBooks (pp. 88–93). <https://doi.org/10.1201/9781003529231-15>
2. Ananya Gupta, Rakesh Kumar, "Deep Learning-Based Brain Tumor Detection and Segmentation: A Comprehensive Review", IEEE Access, 2024.
3. Andre Esteva, Brett Kuprel, Roberto A. Novoa, Justin Ko, Susan M. Swetter, Helen M. Blau, Sebastian Thrun, "A Deep Learning, Image-Based Approach for Automated Diagnosis of Brain Tumors", PMC, 2022.
4. Bharat Singh, Deepak Kumar, Sahil Kumar, "Brain Tumor Detection Using Deep Convolutional Neural Networks and Transfer Learning", IEEE Xplore, 2023.
5. Ahmed F. Zidan, Amal ElSeddawy, Mahmoud Elkamshishy, "Brain Tumor Classification Using Hybrid CNN and Image Processing Techniques", ScienceDirect, 2023.
6. Chayan Mondal, Md. Kamrul Hasan, "Brain Tumor MRI Image Classification Using Deep Learning", Semantic Scholar, 2023.



INTERNATIONAL
STANDARD
SERIAL
NUMBER
INDIA



INTERNATIONAL JOURNAL OF INNOVATIVE RESEARCH

IN SCIENCE | ENGINEERING | TECHNOLOGY

 9940 572 462  6381 907 438  ijirset@gmail.com



www.ijirset.com

Scan to save the contact details